

# HITEMP140-PT

## AUTOCLAVE TEMPERATURE DATA LOGGER

### WITH 24" FLEXIBLE PROBE



#### Features

- ±0.1°C (0.18°F) Accuracy
- 24" Flexible Probe
- Operates Up To 140°C (284°F)
- Submersible (IP68)
- N.I.S.T. traceable
- User Replaceable Battery
- Rugged
- Programmable start time
- Programmable stop time
- Engraved Label
- Battery Life Indicator

#### Benefits

- Simple Setup and Installation
- Minimal Long-Term Maintenance
- Long-Term Field Deployment

#### Applications

- Autoclave Verification
- Implement HACCP Programs
- Food Preparation and Processing
- Environmental Studies
- Well Monitoring
- Dishwasher Testing
- Pasteurization

The HiTemp140-PT is a submersible, temperature data logger that can operate up to 140°C (284°F) and has an accuracy of +/-0.1°C (0.18°F). The device features a 24" flexible stainless steel probe for measuring extended temperatures up to 260°C (500°F). The probe is durable and can be spiraled, bent or angled in any direction, making it easy to log temperatures within bottles, vials or other hard to reach places.

The HiTemp140-PT records date and time stamped readings, and has non-volatile solid state memory that will retain data even if the battery becomes discharged.

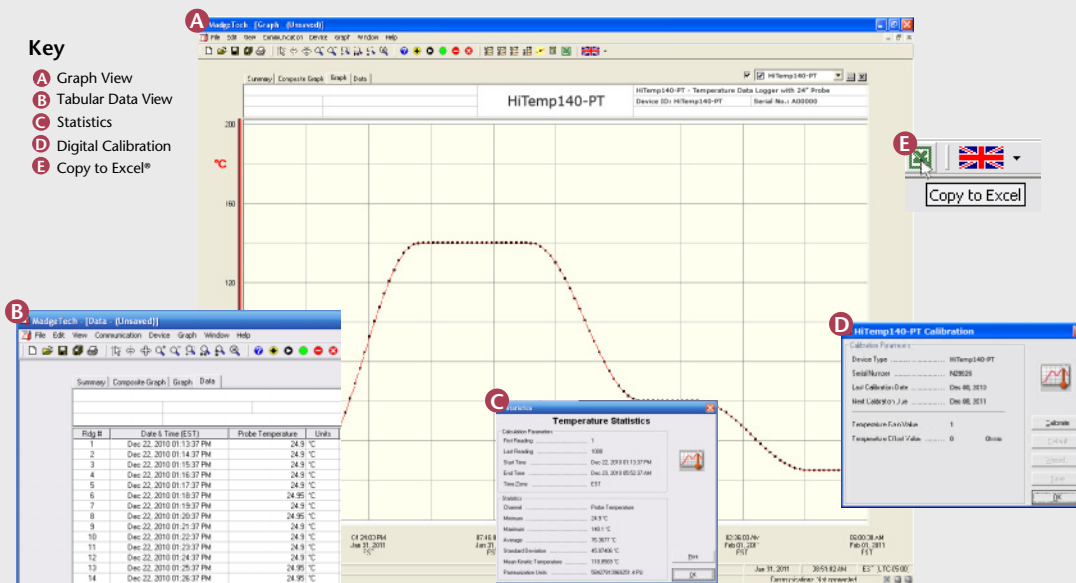
Using the MadgeTech Software, starting, stopping and downloading the HiTemp140-PT is simple and easy. Graphical, tabular and summary data is provided for analysis and data can be viewed in °C, °F, K or °R. The data can also be automatically exported to Excel® for further calculations.



## MADGETECH DATA LOGGER SOFTWARE

#### Key

- A** Graph View
- B** Tabular Data View
- C** Statistics
- D** Digital Calibration
- E** Copy to Excel®



- #### Software Features:
- Multiple graph overlay
  - Statistics
  - Digital calibration
  - Zoom in/ zoom out
  - Lethality equations (F<sub>0</sub>, PU)
  - Mean Kinetic Temperature
  - Full time zone support
  - Data annotation
  - Min./Max./Average lines
  - Data table view
  - Automatic report generation
  - Summary view
  - Multilingual

# HITEMP140-PT SPECIFICATIONS\*

**Temperature Sensor:** 100Ω Platinum RTD

**Probe Measurement Range:** -200°C to +260°C (-328°F to +500°F)

**Temperature Resolution:** 0.01°C (0.02°F)

**Calibrated Accuracy:** ±0.1°C/±0.18°F  
(20°C to +140°C/68°F to +284°F)  
±0.3°C/±0.54°F  
(-20°C to +19.99°C/-4°F to +67.98°F)

**Start Modes:**

- Software programmable immediate start
- Delay start up to eighteen months in advance

**Stop Modes:**

- Manual through software
- Timed (specific date and time)

**Real Time Recording:** May be used with PC to monitor and record data in real time

**Password Protection:** An optional password may be programmed into the device to restrict access to configuration options. Data may be read out without the password.

**Memory:** 32,700 readings

**Wrap Around:** Yes

**Reading Rate:** One second up to once every 24 hours

**Battery Type:** 3.6V high-temperature lithium battery included; **user replaceable**

**Battery Life:** 1 year typical  
(1 minute reading rate at 25°C/77°F)

**Calibration:** Digital calibration through software

**Calibration Date:** Automatically recorded within device

**Data Format:** Date and time stamped °C, °F, K, °R

**Time Accuracy:** ±1 minute/month at 20°C to 30°C (68°F to 86°F) (Stand alone mode)

**Computer Interface:** IFC400 USB docking station required; 125,000 baud

**Software:** XP SP3/Vista/Windows 7

**Operating Environment:** -20°C to +140°C (-4°F to +284°F), 0%RH to 100%RH

**Dimensions (Body):** 2.7" x 0.97" dia. (67mm x 25mm dia.)

**Dimensions (Probe):** Probe tip: 0.125"OD x 1.5"L  
Flexible portion: 24" x 0.062"OD dia.

**Weight:** 4.2 oz (120g)

**Material:** 316 Stainless Steel

**Approvals:** CE

**BATTERY WARNING:** WARNING: FIRE, EXPLOSION, AND SEVERE BURN HAZARD. DO NOT SHORT CIRCUIT, CHARGE, FORCE OVER DISCHARGE, CRUSH, PENETRATE, OR INCINERATE. BATTERY MAY LEAK OR EXPLODE IF HEATED ABOVE 150°C (302°F).

\*SPECIFICATIONS ARE SUBJECT TO CHANGE WITHOUT NOTICE. SPECIFIC WARRANTY REMEDY LIMITATIONS APPLY. CALL 1-603-456-2011 OR GO TO WWW.MADGETECH.COM FOR DETAILS.

## ORDERING INFORMATION

MODEL	DESCRIPTION
HITEMP140-PT	Extended Range Temperature Data Logger with a 24" Flexible Probe
IFC400	Docking station with USB cable, software and manual
ER1425S-HT	Replacement battery for the HiTemp140-PT
*NIST	N.I.S.T. Calibration Certificate

ASK ABOUT  
OUR OTHER  
DATA  
LOGGERS

Temperature  
Humidity  
Pressure  
pH  
Level  
Shock  
LCD Display  
Pulse/Event/State  
Current  
Voltage  
Wireless  
Intrinsically Safe  
Spectral Vibration  
Motion

\*To order the product with the N.I.S.T. certificate add *-CERT* to the end of the part number and add \$60.00 to the price.

DOC-1236009-00 REV 6 2012.02.22



Advanced Technical Services Ltd: Ph +64 3 377 4793 Fax +64 3 3774794  
77 Brisbane Street Christchurch New Zealand

