

PR2000

PRESSURE RECORDER

W/LCD DISPLAY



Features

- Large, backlit LCD display
- Front keypad w/lock feature
- Standard 1/4 in NPT fitting
- High speed download
- Real-time operation
- User-selectable measurement units
- Min./max. & average statistics
- Programmable start/stop time
- Convenient status indicators
- User replaceable batteries

Applications

- Precision Pressure Recording
- HVAC
- Medical/Pharmaceutical
- Environmental studies
- Replace costly strip chart recorders
- Geothermal

The PR2000 is a battery powered pressure recorder, with an LCD display. It is perfect for applications requiring display pressure readings and a logger.

The 8-button keypad and large LCD provide convenient access to current data and recorder setup. Additionally, memory and battery levels, external power status, and sampling and recording status are shown on the LCD.



Available on-screen data includes: statistics (min, max, average); recording status (start, stop and recording rate); display options (units, text size); and calibration information (date calibrated, date for recalibration). Statistics can be cleared at any time during logging.

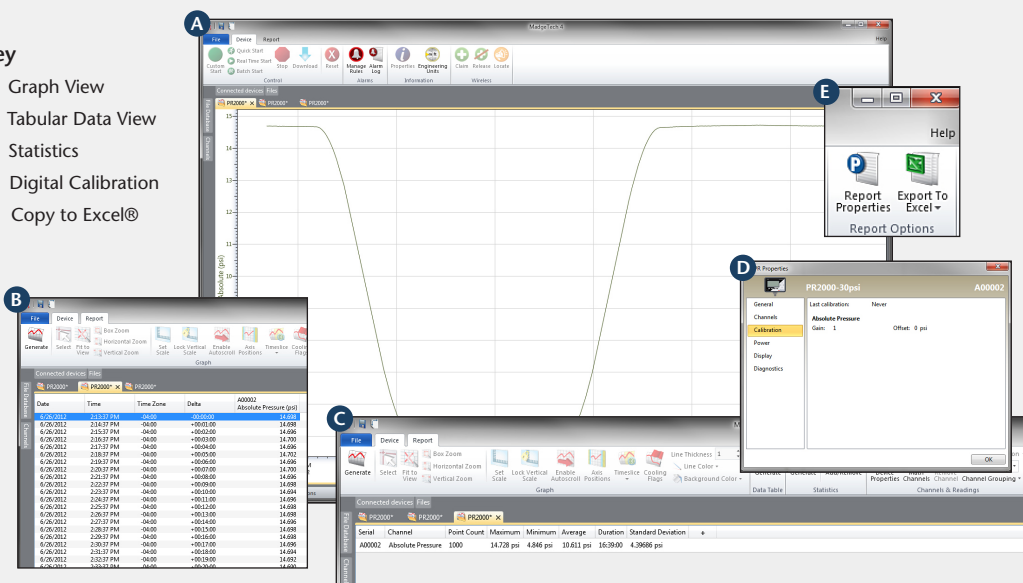
With 262,143 readings, the PR2000 has one of the largest memory capacities of any similar data recorder on the market. The non-volatile memory will retain recorded data, even if battery power is lost.

A calibration certificate is available for users needing to meet regulatory requirements. Creating permanent records, performing data calculations, and the graphing of data is quick and easy: Simply connect the interface cable to an available USB port and, with a few clicks of the mouse, data is downloaded and ready for review or export to Excel®.

MADGETECH DATA LOGGER SOFTWARE

Key

- A Graph View
- B Tabular Data View
- C Statistics
- D Digital Calibration
- E Copy to Excel®



Software Features:

- Multiple graph overlay
- Statistics
- Digital calibration
- Zoom in/ zoom out
- Lethality equations (F0, PU)
- Mean Kinetic Temperature
- Full time zone support
- Data annotation
- Min./Max./Average lines
- Data table view
- Automatic report generation
- Summary view
- Multilingual



Advanced Technical Services Ltd
Ph 03 3774793
sales@advancedtechnical.co.nz

PR2000 SPECIFICATIONS*

*SPECIFICATIONS ARE SUBJECT TO CHANGE WITHOUT NOTICE. SPECIFIC WARRANTY REMEDY LIMITATIONS APPLY. CALL 1-603-456-2011 OR GO TO WWW.MADGETECH.CO.NZ FOR DETAILS.

Pressure

Pressure Sensor:	Semiconductor strain gauge
Pressure Range:	0 to 30, 100, 300 and 500 PSIA/G; 0 to 1000 and 5000 PSIA
Pressure Resolution:	0.002, 0.005, 0.02, 0.05 PSIA/G; 0.05, 0.2 PSIA
Calibrated Accuracy:	2 % FSR, 0.25 % @ 25 °C typical
Pressure Response Time:	0.1 ms (10 to 90 % FSR)

DOT-MATRIX LCD

Dimensions:	2.5 in x 1.375 in (63 mm x 35 mm)
Text:	Configurable channel text size
Indicators:	Power, status, memory
Backlight:	Configurable w/auto shut-off and contrast adjustment
Start/Stop Time:	Software programmable start time and date, up to six months in advance; programmable stop time
Memory:	262,143 total readings; software configurable memory wrap

Reading Rate:	1 reading every 2 seconds up to 1 reading every 24 hours
Calibration:	Digital calibration through software
Calibration Date:	Automatically recorded within device
Battery Type:	6 alkaline AA batteries, user replaceable
Battery Life:	1 year battery life at 1 minute reading rate with display off. 30 days typical with continuous display use. Optional AC adapter available.
Data Format:	PSIG, inHg, mmHg, bar, atm, Torr, Pa, kPa, MPa
Time Accuracy:	±1 minute/month (at 20 °C to 30 °C)
Computer Interface:	USB (interface cable required); 115,200 baud
Software:	XP SP3/Vista/Windows 7/Windows 8
Operating Environment:	-20 °C to +60 °C, 0 %RH to 95 %RH non-condensing
Dimensions:	5.1 in x 4.8 in x 1.705 (130 mm x 122 mm x 43.3 mm)
Weight:	40 oz (1134 g)
Enclosure:	Black anodized aluminum case/NPT Steel
Approvals:	CE

BATTERY WARNING: RISK OF FIRE OR EXPLOSION. DO NOT RECHARGE, FORCE OPEN, HEAT OR DISPOSE OF IN FIRE.

ORDERING INFORMATION

MODEL	DESCRIPTION
PR2000-30	0-30PSIA(G) Pressure Recorder with LCD Display
PR2000-100	0-100PSIA(G) Pressure Recorder with LCD Display
PR2000-300	0-300PSIA(G) Pressure Recorder with LCD Display
PR2000-500	0-500PSIA(G) Pressure Recorder with LCD Display
PR2000-1000	0-1000PSIA Pressure Recorder with LCD Display
PR2000-5000	0-5000PSIA Pressure Recorder with LCD Display
Calibration Certificate	Calibration Certificate available for data logger
IFC200	Software, manual and USB interface cable
MN1500	Replacement battery for PR2000 (device requires 6 batteries)

ASK ABOUT
OUR OTHER
DATA
LOGGERS

Temperature
Humidity
Pressure
pH
Level
Shock
LCD Display
Pulse/Event/State
Current
Voltage
Wireless
Intrinsically Safe
Spectral Vibration
Motion

Distributed by: